

Infrastructure Assessment

Keep control over your IT assets to make the most of your infrastructure and guarantee adequate security.

Performing an *Infrastructure Assessment* is the ideal way to gain visibility over your set-up for easier decision making.

Digital transformation recently accelerated in response to the recent sanitary crisis. Consequently, IT infrastructures have been extended to support cloud-based applications and allow large numbers of remote employees to connect. Therefore, it is anticipated that more than 50% of IT will be hosted in the cloud by 2023 and that the efficiency of on-prem infrastructure must improve. This evolution will definitely benefit organizations, but also lead to new challenges in managing more extended infrastructures. Indeed, value creation and process evolution resulting from digital transformation will involve endless modifications of IT infrastructures to support new needs.

Don't be part of those losing control and keep an up-to-date overview of your infrastructure topology including network, security and endpoints.

Too many organizations implement a series of infrastructure modifications without proper documentation. Over time, this is bound to lead to weak configuration, saturated equipment or even open vulnerabilities within the infrastructure affecting business efficiency.

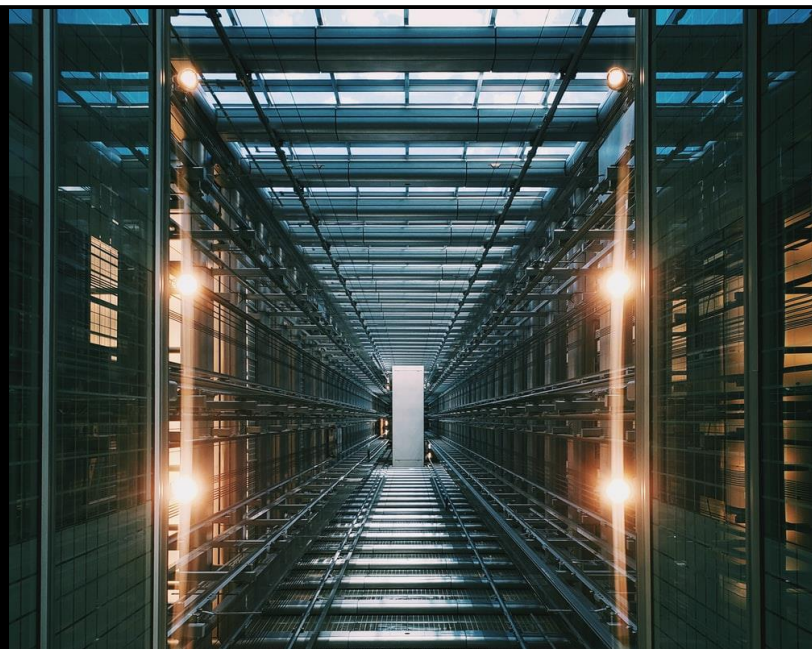
Therefore Orange-BKM supports Belgian organizations by performing *Infrastructure Assessments* developed to aid IT decision makers. Benefit from a clear vision of your infrastructure situation to guide your IT projects and assist in decision-making processes.

When should you perform an Infrastructure Assessment?

- When you need to gain visibility over your infrastructure state to make decisions;
- Before initiating a modification within your infrastructure (i.e. new equipment, new service, cloud migration...);

How often?

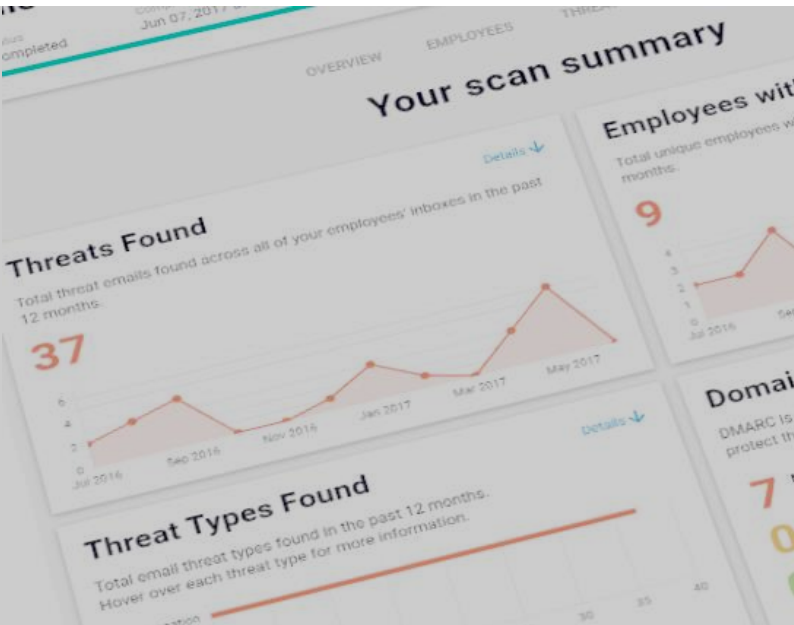
- No requirement to perform recurring assessments;
- Project-based approach;



How does Infrastructure Assessment work?

- Interview phase to identify your challenges and define the assessment scope;
- Activity planning and execution to collect infrastructure raw data as is;
- Consolidate raw data collected and integrated into a reporting document;
- Include recommendations and suggested priorities to improve infrastructure performance;

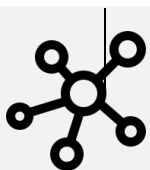
How to leverage Infrastructure Assessment?



The purpose of our Infrastructure Assessment is to adopt a pragmatic approach offering quick return on investment

- Ensure suitability of your existing infrastructure to implement new integration projects;
- Support your ICT roadmap definition with a list of recommendations and priorities;
- Document the current state of your infrastructure for evolution follow-up;
- Comply with your internal ICT policies to keep visibility over your infrastructure;

Which components of your infrastructures can be assessed?



Network Assessment

- WAN connectivity (router, performance, access);
- LAN architecture performance and resilience;
- WLAN performance;
- Network Access Control;
- Segmentation;
- Guest control;



Security Assessment

- Perimeter security (NGFW);
- Cloud Services Security (O365, Public Cloud, ...);
- User Awareness maturity;
- Data Integrity & Access Management (AD, VPN, MFA, ...);
- Vulnerability Scanning;



Wintel Assessment

- Data Retention strategy;
- Patch Management;
- Resource utilization and capacity planning;
- Disaster Recovery Strategy;
- Endpoint Security;
- Asset Management;